

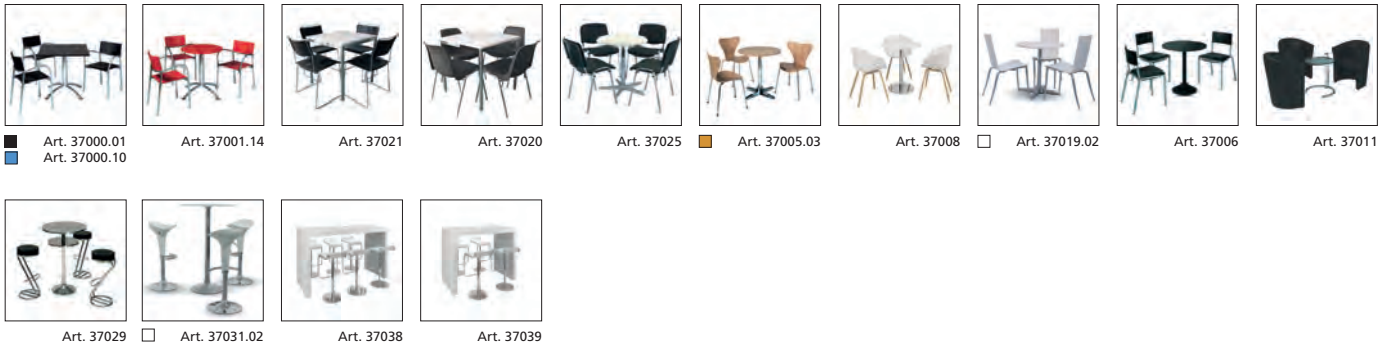
VON ANFANG BIS ERFOLG.

A photograph of a large, dark rock formation with a cave-like opening. The cave is filled with thick, white ice. In the foreground, a large, bright green cube is placed on a frozen lake. The cube is reflected in the water. The sky is a clear, pale blue.

**GRENZEN NEU
DEFINIERT.**

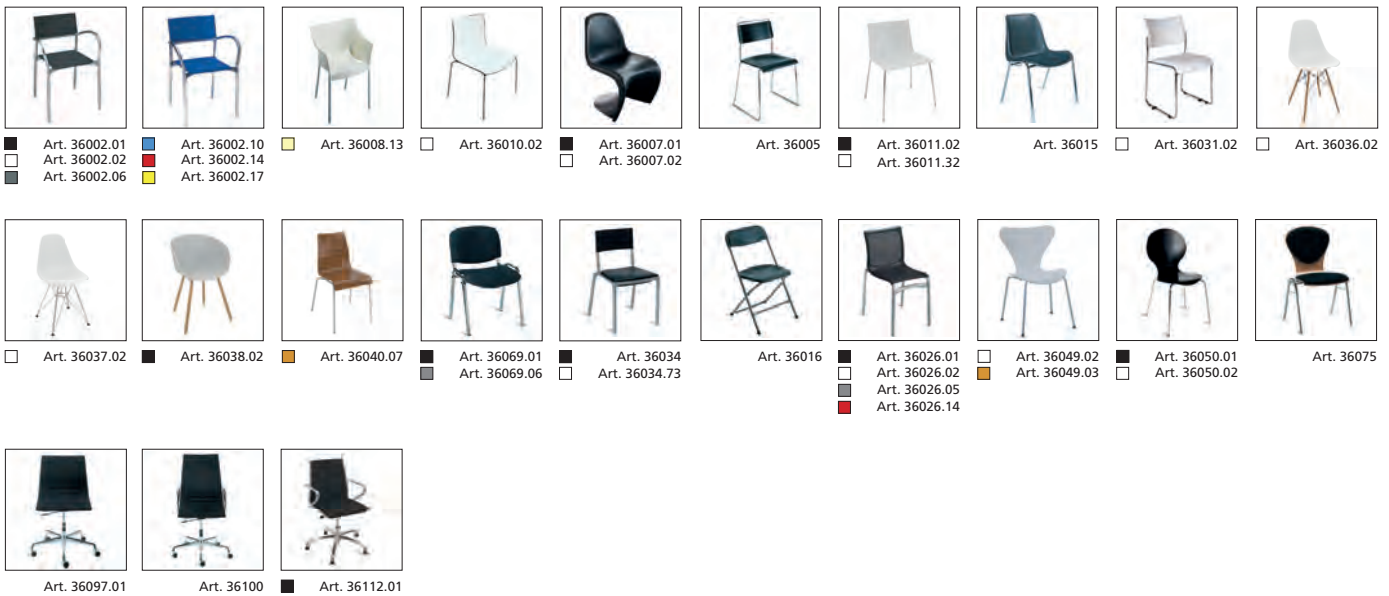
FAIRNET | Ihr 360°-Dienstleister für Kommunikation im Raum.

Unser **SERVICE** für Sie: Mietmöbel-Sortiment
Rental Furniture: At your **SERVICE!**



Art. 37000.01
 Art. 37000.10
 Art. 37001.14
 Art. 37021
 Art. 37020
 Art. 37025
 Art. 37005.03
 Art. 37008
 Art. 37019.02
 Art. 37006
 Art. 37011
 Art. 37029
 Art. 37031.02
 Art. 37038
 Art. 37039

Stühle/Chairs 01



Art. 36002.01
 Art. 36002.02
 Art. 36002.06
 Art. 36002.10
 Art. 36002.14
 Art. 36002.17
 Art. 36008.13
 Art. 36010.02
 Art. 36007.01
 Art. 36007.02
 Art. 36005
 Art. 36011.02
 Art. 36011.32
 Art. 36015
 Art. 36031.02
 Art. 36036.02
 Art. 36037.02
 Art. 36038.02
 Art. 36040.07
 Art. 36069.01
 Art. 36069.06
 Art. 36034
 Art. 36034.73
 Art. 36016
 Art. 36026.01
 Art. 36026.02
 Art. 36026.05
 Art. 36026.14
 Art. 36049.02
 Art. 36049.03
 Art. 36050.01
 Art. 36050.02
 Art. 36075

Sessel, Sofa/Easy chairs, Sofas 02



Art. 36200.01
 Art. 36200.02
 Art. 36201.01
 Art. 36202.01
 Art. 36202.02
 Art. 36204
 Art. 36207
 Art. 36217.02
 Art. 36217.14
 Art. 36218.02
 Art. 36234.01
 Art. 36234.02
 Art. 36233.02
 Art. 36235.02
 Art. 36236.01
 Art. 36236.02
 Art. 36237.02

Barhocker/Bar stools 03



Art. 36268.01
 Art. 36268.02
 Art. 36268.04
 Art. 36268.14
 Art. 36284.01
 Art. 36264.01
 Art. 36264.07
 Art. 36251.06
 Art. 36251.13
 Art. 36269.02
 Art. 36270.01
 Art. 36270.02
 Art. 36263.02
 Art. 36283.01
 Art. 36283.02
 Art. 36283.03
 Art. 36261.01
 Art. 36261.02
 Art. 36257.02
 Art. 36285.02
 Art. 36285.04
 Art. 36255.01
 Art. 36255.02



Art. 36291
 ■ Art. 36295.01 ■ Art. 36295.14
 □ Art. 36295.02 ■ Art. 36295.34

Stehische/Stand-up tables 05



■ Art. 36450.01 ■ Art. 36451 ■ Art. 36454.01 ■ Art. 36462.01 ■ Art. 36452.01 □ Art. 36453.02 ■ Art. 36459.01 □ Art. 36465.02
 □ Art. 36450.02 ■ Art. 36454.02 □ Art. 36462.02 □ Art. 36452.02 ■ Art. 36459.02
 ■ Art. 36450.03 ■ Art. 36454.03 ■ Art. 36462.20 ■ Art. 36459.14
 ■ Art. 36454.04



■ Art. 36460.01 ■ Art. 36461.01 □ Art. 36469.02 □ Art. 36468.02 □ Art. 36470.02 □ Art. 36471.02 □ Art. 36472.02

Tische/Tables 06



■ Art. 36384.01 □ Art. 36342.02 □ Art. 36300.02 ■ Art. 36387.01 □ Art. 36302.02 □ Art. 36303.02 ■ Art. 36305.01 □ Art. 36301.02 □ Art. 36304.02 ■ Art. 36382.01
 □ Art. 36384.02 ■ Art. 36342.06 □ Art. 36382.02
 ■ Art. 36384.03 ■ Art. 36342.10



■ Art. 36306.01 ■ Art. 36308.01 □ Art. 36311.02 □ Art. 36322.02 □ Art. 36323.02 □ Art. 36324.02 ■ Art. 36318.01 ■ Art. 36319.01 ■ Art. 36397.01 ■ Art. 36396.01
 □ Art. 36306.02 □ Art. 36318.02 □ Art. 36319.02 □ Art. 36396.02



■ Art. 36400.01 ■ Art. 36371.04 ■ Art. 36355.01 ■ Art. 36359.03 ■ Art. 36360.01 ■ Art. 36349.01 ■ Art. 36364.01 ■ Art. 36346.01 ■ Art. 36365.03 ■ Art. 36375
 □ Art. 36400.02 ■ Art. 36371.13 □ Art. 36355.02 □ Art. 36360.03 ■ Art. 36360.04 □ Art. 36349.02 □ Art. 36364.02 □ Art. 36346.02 ■ Art. 36365.20
 ■ Art. 36360.04 ■ Art. 36360.19 ■ Art. 36364.19 ■ Art. 36346.10 ■ Art. 36365.20
 □ Art. 36360.20 ■ Art. 36364.20 ■ Art. 36346.14 ■ Art. 36346.19
 ■ Art. 36364.26 ■ Art. 36346.20



□ Art. 36376.02 ■ Art. 36392
 ■ Art. 36376.03

Theken/Counters 07



Art. 31500 Art. 31501 Art. 31503 Art. 31500.99 Art. 31502 Art. 31561 Art. 31562 Art. 31560 Art. 31566 Art. 37200



Art. 37202 ■ Art. 37205.03 Art. 37381.02

PC-Arbeitsplätze/PC workstations 08



Art. 31700 Art. 31701 Art. 37209 Art. 37210



Art. 31800

Art. 36514

Art. 36500

Art. 31710.02
Art. 31710.03
Art. 31710.04

Art. 31712.02
Art. 31712.03
Art. 31712.04

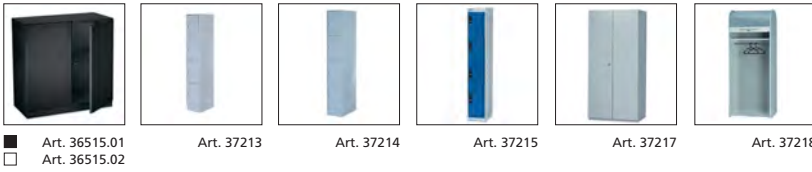
Art. 36504

Art. 36505

Art. 36508

Art. 36512

Art. 36513



Art. 36515.01
Art. 36515.02

Art. 37213

Art. 37214

Art. 37215

Art. 37217

Art. 37218

Vitrinen verschließbar/Lockable display cabinets and cases 10



Art. 31658

Art. 36614

Art. 36620

Art. 31659

Art. 36621

Art. 31651

Art. 36615

Art. 31660.98

Prospektständer/Leaflet display racks 11



Art. 31915

Art. 31902

Art. 31906

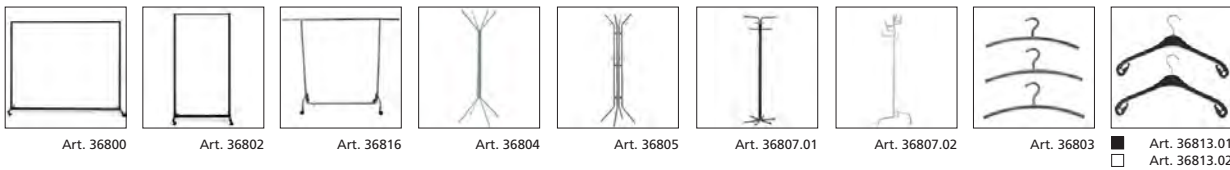
Art. 36812

Art. 31916

Art. 31917

Art. 36810

Garderobenständer/Coat stands 12



Art. 36800

Art. 36802

Art. 36816

Art. 36804

Art. 36805

Art. 36807.01

Art. 36807.02

Art. 36803

Art. 36813.01
Art. 36813.02

Diverse Ausstattungsgegenstände/Miscellaneous fixtures and fittings 13



Art. 36708

Art. 36713.01
Art. 36713.02
Art. 36713.04

Art. 36723

Art. 36717

Art. 36704

Art. 36705

Art. 36720

Standausstattung/Stand fittings 14



Art. 31200

Art. 31204

Art. 31209

Art. 31210

Art. 31219

Art. 31220

Art. 31221

Art. 31224

Art. 31260

Art. 31226

Art. 31227

Art. 31228

Art. 31229

Art. 31230

Art. 31231

Art. 31232

Art. 31233

Art. 31234

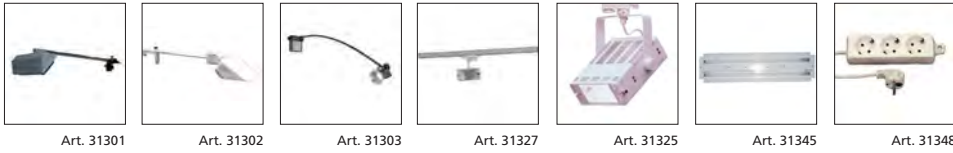
Art. 31235

Art. 31236

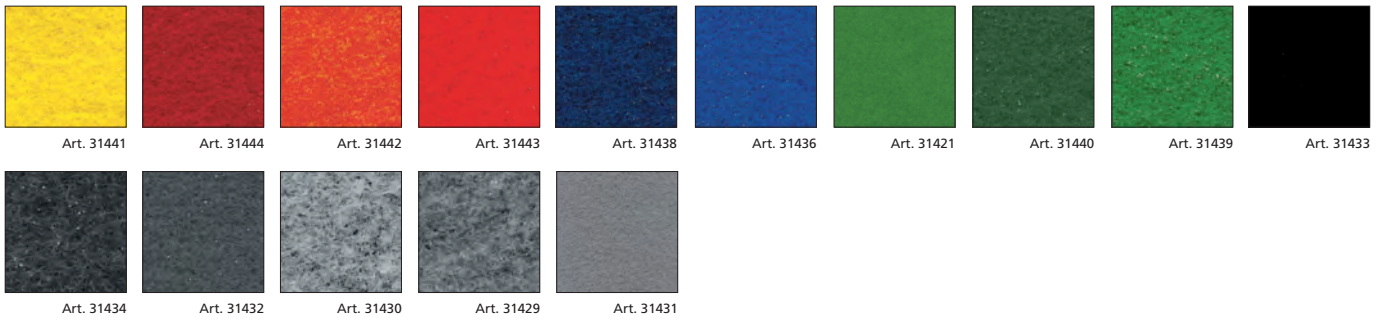
Küchen- und Kühlmöbel, Elektrogeräte/Kitchen units, refrigerators, electrical appliance 15



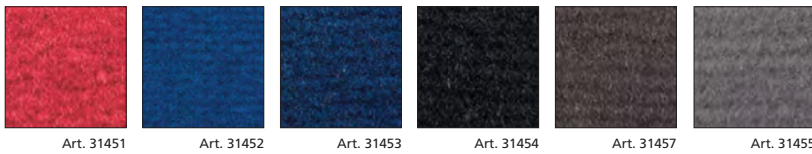
Standbeleuchtung/Stand lighting 16



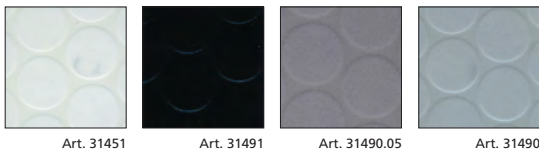
Nadelfilz-Teppichboden/Needle felt 17



Velours-Teppichboden/Velour carpeting 18

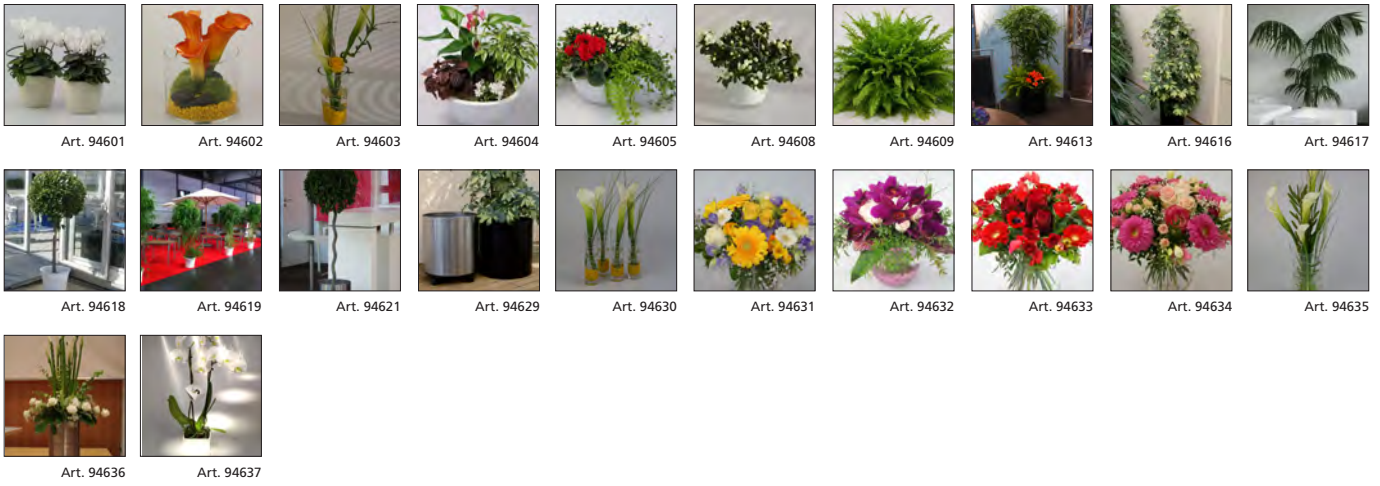


PVC-Noppenbelag, abwischbar/Wipe-clean textured PVC flooring 19



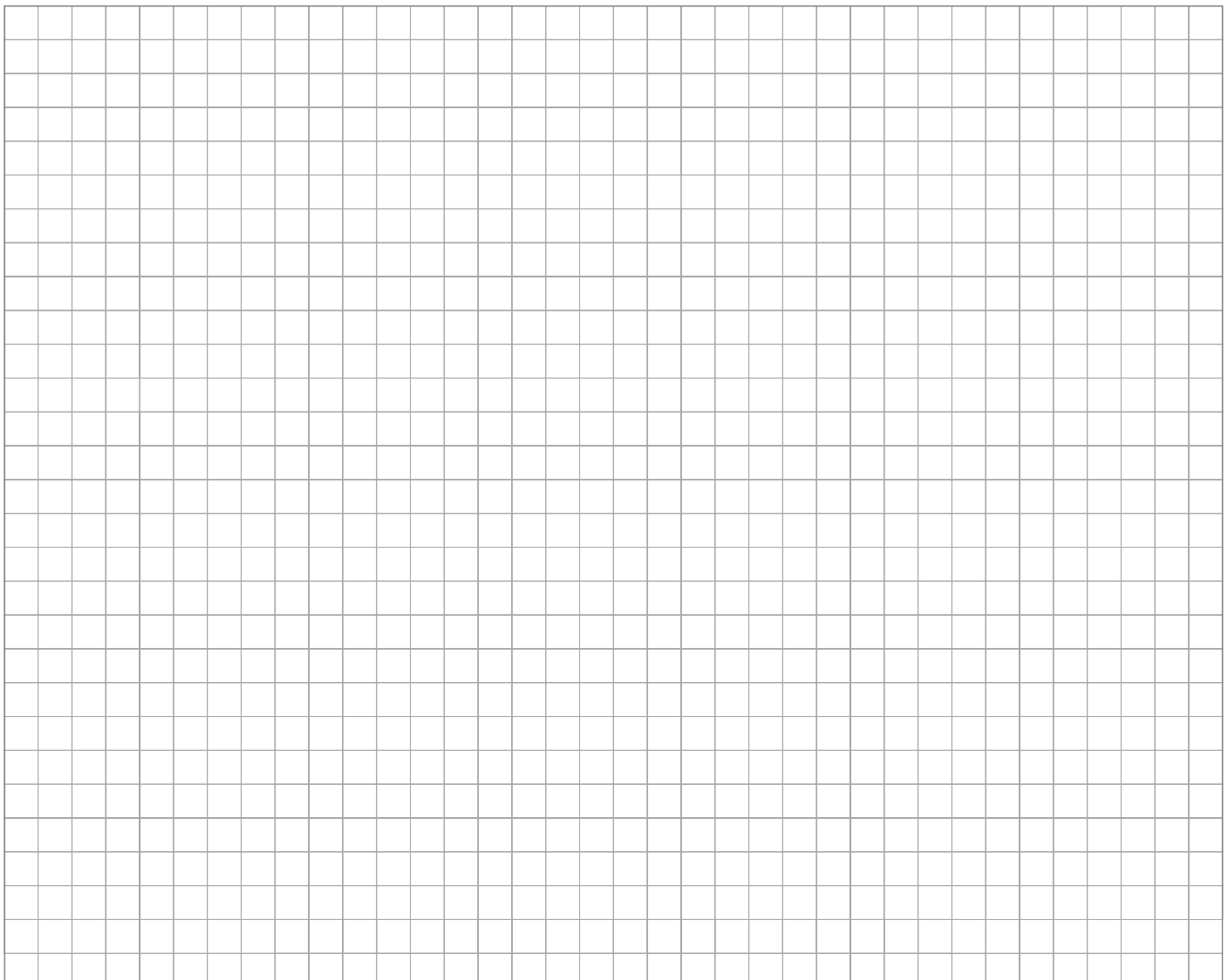
Aus drucktechnischen Gründen kann es zu geringfügigen Farbdifferenzen zwischen den Originalfarbtönen der Bodenbeläge und den hier abgebildeten Farbmuster kommen. Wir bitten dies zu berücksichtigen.

Due to technical reasons in regards to printing, there could be slight colour differences between the original colours of the flooring and the colour patterns illustrated here. We ask you to take this into consideration.



Farb- und Ausstattungscodes/Color and equipment code:

- | | | | |
|---|--|--|---|
| <input checked="" type="checkbox"/> .01 schwarz/black | <input checked="" type="checkbox"/> .09 hellblau/bright blue | <input type="checkbox"/> .20 Glas matt/frosted glass | <input checked="" type="checkbox"/> .35 palisander/palisander |
| <input type="checkbox"/> .02 weiß/white | <input type="checkbox"/> .10 blau/blue | <input checked="" type="checkbox"/> .25 Kirschbaum/cherry | <input type="checkbox"/> .37 natur/natural |
| <input checked="" type="checkbox"/> .03 Buche/beechn | <input type="checkbox"/> .11 dunkelblau/dark blue | <input type="checkbox"/> .26 inox/innox | <input type="checkbox"/> .73 mit Armlehnen/with armrests |
| <input type="checkbox"/> .04 grau/grey | <input type="checkbox"/> .12 braun/brown | <input checked="" type="checkbox"/> .28 lila/lilac | <input type="checkbox"/> .74 mit Tablett/with tray |
| <input type="checkbox"/> .05 dunkelgrau/dark grey | <input type="checkbox"/> .13 elfenbein/ivory | <input checked="" type="checkbox"/> .30 Galarot/gala red | <input type="checkbox"/> .98 beleuchtet/illuminated |
| <input type="checkbox"/> .06 anthrazit/anthracite | <input type="checkbox"/> .14 rot/red | <input checked="" type="checkbox"/> .32 Nussbaum/walnut tree | |
| <input type="checkbox"/> .07 beige/beige | <input type="checkbox"/> .17 gelb/yellow | <input type="checkbox"/> .33 transparent/transparent | |
| <input type="checkbox"/> .08 Silber/silver | <input type="checkbox"/> .19 Klarglas/glass | <input checked="" type="checkbox"/> .34 Orange/orange | |





FAIRNET Gesellschaft für Messe-,
Ausstellungs- und Veranstaltungsservice mbH
Messe-Allee 1 · 04356 Leipzig
Tel.: +49 341 678-8470
Fax: +49 341 678-8472
office@fairnet.de

www.fairnet.de